



KILLARNEY
METALS

2019

PRODUCT CATALOG

DRIP & DRAIN PANS
PROTECT YOUR HOME
AND BUSINESS



KM PRODUCTS ARE
PROUDLY MADE IN THE USA

WE CATCH IT ALL



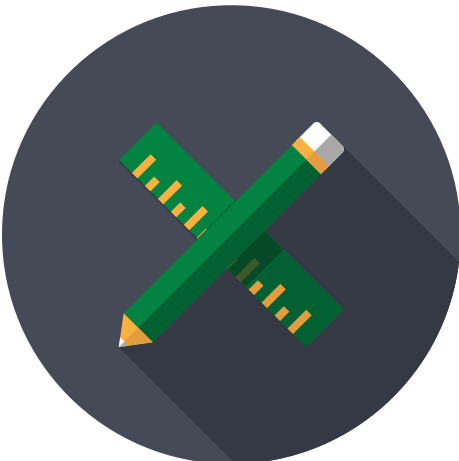
Residential Applications

A home is a significant investment, and your home holds some of your most precious possessions. On average, faulty plumbing and failed appliances cause over \$7,000 in water damage per occurrence! How can you protect your home and belongings from water damage? A drip or drain pan from Killarney Metals is one of the most cost-effective solutions for protecting your investment. We produce durable, long-lasting metal pans and trays for a variety of appliances and other applications such as washers, ice makers, refrigerators, under sink cabinets and more.



Commercial Applications

Protecting your employees and keeping your business operating smoothly is vital. At Killarney Metals we specialize in producing heavy-duty spill containment pans designed to protect your coworkers from slips, to keep your production floor free from spills and save you time and money by eliminating the risk of violations of EPA and OSHA standards. You work hard, so we design our pans to work hard too. When you purchase a Killarney Metals drip or drain pan, you are buying a pan made right here in the USA with ISO certified quality standards and attention to craftsmanship.



Custom Design & Fabrication

We understand that no two spill containment requirements are exactly the same. That is why, at Killarney Metals, we provide custom manufacturing services to produce just the right drip or drain pan to suit your job. Whether needing a custom pan for your petroleum refinery process or a specially designed pan for the office water cooler, we have the manufacturing services for you.



KILLARNEY METALS NO LEAK+ GUARANTEE

Killarney Metals guarantees the structural and material integrity of its drip and drain pans. All craftsmanship and materials are warranted for up to 3 years under normal use and conditions. All welds on Killarney Metals' drip and drain pans will remain leak free for the warranty period. Handles, tabs and other additional factory-installed enhancements on the drip and drain pans will remain functional for the duration of the warranty period. The Killarney Metals NO LEAK+ Guarantee covers the product. If the drip and/or drain pan is unable to perform its intended purpose due to manufacturing defect* during the warranty term, we will replace the pan.

Visit killarneymetals.com for complete warranty information.

Residential Applications

WATER HEATER PANS

A leaking water heater can flood a house, destroy flooring, walls, furnishings and anything else that gets in its way. Water Heater Drain Pans are made to help prevent such damage by controlling water heater leaks and diverting the leaking water to a drain pipe and away from your belongings. Installing a Water Heater Drain Pan is an investment that pays high dividends whenever it may be needed. Don't go cheap when it comes to the protection of your home. Invest in a high-quality water heater drain pan.



SKU: 145215

Galvanized Water Heater Pan

- **Size:** 24.50" W x 32.75" L x 4.00" H
- **Finish/Material:** Galvanized Steel - 11 Gauge



SKU: 136048

Water Heater Maintenance Pan - Left

- **Size:** 36.00" W x 36.00" L x 1.00" H
- **Finish/Material:** Galvanized Steel - 18 Gauge



SKU: 135970

Water Heater Maintenance Pan - Right

- **Size:** 36.00" W x 36.00" L x 1.00" H
- **Finish/Material:** Galvanized Steel - 18 Gauge



SKU: 134858

Galvanized Water Heater Pan

- **Size:** 24.00" W x 24.00" L x 2.00" H
- **Finish/Material:** Galvanized Steel - 18 Gauge



SKU: 129857

Galvanized Water Heater Pan

- **Size:** 36.00" W x 36.00" L x 4.00" H
- **Finish/Material:** Galvanized Steel - 20 Gauge





Residential Applications

WASHER DRIP PANS

Water damage and mold are a big problem for homeowners. Our heavy duty washer drip pans are made to prevent these problems from occurring. We have Washer Drip Pans that work with any brand washing machine. Standard plastic washer pans can crack, dry rot or even cause uneven surfaces for your washing machine to rest on which can lead to more water leaks or spills. Don't settle for cheap when protecting your home.



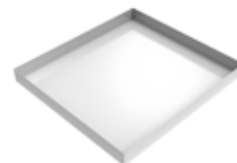
SKU: 127184
Stainless Drip Pan

- **Size:** 27.50" W x 28.50" L x 2.00" H
- **Finish/Material:** Stainless Steel - 18 Gauge



SKU: KM-02997
Stainless Front-Load Washer Floor Tray

- **Size:** 30.00" W x 32.00" L x 2.50" H
- **Finish/Material:** Stainless Steel - 20 Gauge



SKU: KM-02804
White Compact Washer Floor Tray

- **Size:** 25.00" W x 27.00" L x 2.50" H
- **Finish/Material:** *PC White CRS - 20 Gauge



SKU: KM-02803
Compact Washer Floor Tray

- **Size:** 25.00" W x 27.00" L x 2.50" H
- **Finish/Material:** Galvanized Steel - 20 Gauge



SKU: KM-01383
Galvanized Washer Floor Tray

- **Size:** 36.00" W x 36.00" L x 2.50" H
- **Finish/Material:** Galvanized Steel - 20 Gauge



SKU: KM-01382
Stainless Washer Floor Tray

- **Size:** 32.00" W x 32.00" L x 2.50" H
- **Finish/Material:** Stainless Steel - 20 Gauge



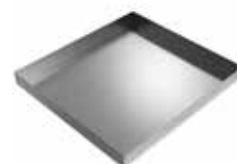
SKU: KM-01381
Stainless Washer Floor Tray

- **Size:** 30.00" W x 32.00" L x 2.50" H
- **Finish/Material:** Stainless Steel - 20 Gauge



SKU: KM-01380
Galvanized Washer Floor Tray

- **Size:** 30.00" W x 32.00" L x 2.50" H
- **Finish/Material:** Galvanized Steel - 20 Gauge



SKU: KM-01377
Stainless Compact Washer Floor Tray

- **Size:** 25.00" W x 27.00" L x 2.50" H
- **Finish/Material:** Stainless Steel - 20 Gauge



SKU: 135493
Stainless Drip Pan

- **Size:** 34.00" W x 35.00" L x 1.50" H
- **Finish/Material:** Stainless Steel - 18 Gauge



SKU: 132783
Galvanized Drip Pan

- **Size:** 30.50" W x 33.00" L x 2.00" H
- **Finish/Material:** Galvanized Steel - 14 Gauge



SKU: 112000
Stainless Washer Drip Pan

- **Size:** 27.50" W x 32.00" L x 2.00" H
- **Finish/Material:** Stainless Steel - 18 Gauge

*Powder Coated White Cold Rolled Steel



SKU: KM-03293

Double Front Load Washer Drip Tray

- **Size:** 32.00" W x 56.00" L x 2.50" H
- **Finish/Material:** Stainless Steel - 20 Gauge



Residential Applications

ICE MAKER DRIP PANS

Ice makers use water to make ice. Whether in home or office, an ice maker is a possible risk for property damaging leaks. Using an Ice Maker Drip Pan can prevent such damage and save your home and office from unnecessary expense. Check out our Ice Maker Drip Trays made from galvanized, stainless and aluminum materials below.



SKU: 121349

Stainless Ice Maker Pan

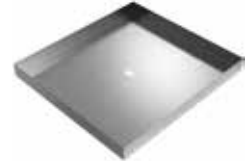
- **Size:** 17.00" W x 25.00" L x 1.50" H
- **Finish/Material:** Stainless Steel - 18 Gauge



SKU: 124969

Refrigerator Drip Pan - Galvanized

- **Size:** 28.00" W x 29.00" L x 1.50" H
- **Finish/Material:** Galvanized Steel - 20 Gauge



SKU: KM-01711

Stainless Ice Maker Drain Pan

- **Size:** 25.00" W x 27.00" L x 2.50" H
- **Finish/Material:** Stainless Steel - 20 Gauge



SKU: KM-02721

Stainless Ice Maker Drain Pan

- **Size:** 27.00" W x 29.00" L x 2.50" H
- **Finish/Material:** Stainless Steel - 20 Gauge



SKU: KM-02964

Galvanized Ice Maker Drain Pan

- **Size:** 23.00" W x 24.00" L x 2.00" H
- **Finish/Material:** Galvanized Steel - 18 Gauge



SKU: KM-02076

Stainless Ice Maker Drain Pan

- **Size:** 28.00" W x 36.00" L x 2.50" H
- **Finish/Material:** Stainless Steel - 14 Gauge



SKU: 146358

Galvanized Ice Maker Pan

- **Size:** 15.00" W x 21.00" L x 2.00" H
- **Finish/Material:** Galvanized Steel - 20 Gauge



SKU: 144937

Stainless Ice Maker Pan

- **Size:** 15.00" W x 24.00" L x 1.50" H
- **Finish/Material:** Stainless Steel - 18 Gauge



SKU: 115544

Aluminum Ice Machine Pan

- **Size:** 24.00" W x 26.00" L x 1.00" H
- **Finish/Material:** Aluminum - 0.03"

Customer Testimonial

"I've been very happy with the products I've purchased from your company; competitive price, very good quality."

~ Commercial Client, BAE Systems



Residential Applications

AC DRIP PANS

Condensation is a normal byproduct of the operation of an air conditioner. Condensate from an AC unit can cause damage and mold in homes and offices. An air conditioner drip pan for an AC Unit will catch this condensation and prevent it from harming your investment. Check out our AC Drip Pans below and let us know if we can help you with a custom air conditioner drip pan.



SKU: 124273

Galvanized AC Drain Pan

- **Size:** 8.00" W x 27.00" L x 2.50" H
- **Finish/Material:** Galvanized Steel - 18 Gauge



SKU: 128273

Galvanized AC Drip Pan

- **Size:** 24.00" W x 44.00" L x 2.00" H
- **Finish/Material:** Galvanized Steel - 18 Gauge



SKU: KM-02410

A-Coil Drain Pan

- **Size:** 20.60" W x 23.00" L x 1.25" H
- **Finish/Material:** Galvanized Steel - 14 Gauge



SKU: 139795

Stainless AC Drip Pan

- **Size:** 28.00" W x 28.00" L x 2.00" H
- **Finish/Material:** Stainless Steel - 18 Gauge



SKU: 136632

Exterior Air Conditioner Drip Pan

- **Size:** 10.00" W x 44.00" L x 2.00" H
- **Finish/Material:** Galvanized Steel - 18 Gauge



SKU: 130665

Galvanized AC Drip Pan

- **Size:** 24.00" W x 33.00" L x 2.00" H
- **Finish/Material:** Galvanized Steel - 18 Gauge



SKU: 111805

Stainless Drain Pan

- **Size:** 4.75" W x 16.50" L x 2.00" H
- **Finish/Material:** Stainless Steel - 18 Gauge



SKU: 111494

Galvanized AC Drip Pan

- **Size:** 20.00" W x 20.00" L x 2.00" H
- **Finish/Material:** Galvanized Steel - 20 Gauge



SKU: 99744

Galvanized AC Drip Pan

- **Size:** 14.00" W x 44.00" L x 2.00" H
- **Finish/Material:** Galvanized Steel - 16 Gauge

Customer Testimonial

"Working with Killarney Metals was seamless. From ordering online to exchanging a drip pan, when I realized I had ordered the wrong item, Killarney was efficient and customer service focused. I wouldn't hesitate to recommend this company to others looking for drip pan solution."

~ Commercial Client, Signature Systems Group LLC in New York, NY



Residential Applications

SINK DRIP PANS

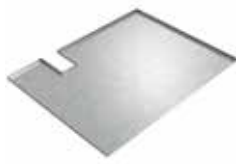
The environment under a kitchen or bathroom sink is prime for unnoticed leaks, mold and damage. A wood cabinet with exposed plumbing (that might not be actively checked often) is a likely water damage expense waiting to happen. Leaking plumbing under a sink, leaks from disposals, and leaking cleaning materials will cause damage to cabinets and flooring. Stop the damage by simply installing one of our heavy duty under sink drip pans. These under sink drip pans are inexpensive compared to the cost of repairing water damage caused by not have an under sink drip pan.



SKU: 124510

Stainless Under Sink Pan

- **Size:** 22.50" W x 34.25" L x 1.50" H
- **Finish/Material:** Stainless Steel - 20 Gauge



SKU: KM-02168

Custom Undersink Drip Tray

- **Size:** 23.50" W x 30.50" L x 0.60" H
- **Finish/Material:** Galvanized Steel - 20 Gauge



SKU: 134577

Galvanized Under Sink Pan

- **Size:** 23.00" W x 28.50" L x 2.00" H
- **Finish/Material:** Galvanized Steel - 20 Gauge



SKU: 114201

Stainless Under Sink Pan

- **Size:** 23.00" W x 31.00" L x 2.50" H
- **Finish/Material:** Stainless Steel - 18 Gauge

Customer Testimonial

"Thank you for your assistance, your professionalism, and your fantastic products - I have told many about the marvelous work and service you provide."

~ Residential Client, St. Petersburg, FL





Residential Applications

SPECIALTY PANS

We have all kinds of Drip Trays that are used in household spill containment applications. Spills can happen from a variety of appliances within the home, and our Drip Tray products can be used to prevent the damage from those spills. Damage from leaking water, oil and other liquids (in use or storage around the house) need to be prevented. Get a durable metal drip tray and put a barrier between your investment and that leak.



SKU: KM-03273
Grill Drip Pan

- **Size:** 12.00" W x 15.00" L x 3.00" H
- **Finish/Material:** Galvanized Steel - 14 Gauge



SKU: 132935
Dehumidifier Drain Pan

- **Size:** 14.00" W x 26.00" L x 3.00" H
- **Finish/Material:** Galvanized Steel - 20 Gauge



SKU: 132403
Shower Steam Generator Drip Pan

- **Size:** 21.00" W x 36.00" L x 2.00" H
- **Finish/Material:** Aluminum - 0.04"



SKU: 119758
Grill Drip Pan

- **Size:** 6.50" W x 24.00" L x 4.00" H
- **Finish/Material:** Stainless Steel - 18 Gauge



SKU: 119652
Oven Tray

- **Size:** 20.00" W x 55.00" L x 3.00" H
- **Finish/Material:** Aluminum - 0.06"

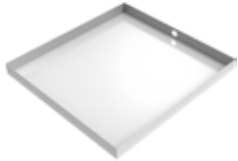




Residential Applications

WASHER DRAIN PANS

Protect your home from water damage, mildew and mold by placing one of our heavy duty washer drain pans under your washing machine. Whatever your brand of washing machine, we have the perfect washing machine drain pan for you. Standard washing machine drain pans can crack or dry rot. Our washer drain pans are guaranteed to work for you.



SKU: KM-01384

White Washer Floor Tray with Drain

- **Size:** 30.00" W x 32.00" L x 2.50" H
- **Finish/Material:** *PC White CRS - 20 Gauge



SKU: KM-03013

Front-Load Washer Floor Tray

- **Size:** 34.00" W x 29.00" L x 2.50" H
- **Finish/Material:** Stainless Steel - 20 Gauge



SKU: KM-03387

Front-Load Washer Floor Tray

- **Size:** 30.00" W x 32.00" L x 2.50" H
- **Finish/Material:** Galvanized Steel - 20 Gauge



SKU: KM-03386

White Front-Load Washer Floor Tray

- **Size:** 30.00" W x 32.00" L x 2.50" H
- **Finish/Material:** *PC White CRS - 20 Gauge



SKU: KM-02668

Washer Pedestal Tray

- **Size:** 30.00" W x 36.00" L x 2.50" H
- **Finish/Material:** Galvanized Steel - 20 Gauge



SKU: KM-02513

Dual Compact Front-Load Washer Pan

- **Size:** 27.00" W x 55.00" L x 2.50" H
- **Finish/Material:** Stainless Steel - 18 Gauge



SKU: KM-01535

Stainless Front-Load Washer Floor Tray

- **Size:** 30.00" W x 32.00" L x 2.50" H
- **Finish/Material:** Stainless Steel - 20 Gauge



SKU: KM-01379

Washer Floor Tray with Drain

- **Size:** 30.00" W x 32.00" L x 2.50" H
- **Finish/Material:** Stainless Steel - 20 Gauge



SKU: KM-01378

Washer Floor Tray with Drain

- **Size:** 30.00" W x 32.00" L x 2.50" H
- **Finish/Material:** Galvanized Steel - 20 Gauge



SKU: 134711

Stainless Drain Pan

- **Size:** 33.00" W x 57.00" L x 3.00" H
- **Finish/Material:** Stainless Steel - 18 Gauge



SKU: 130784

Stainless Drain Pan

- **Size:** 32.00" W x 33.75" L x 2.00" H
- **Finish/Material:** Stainless Steel - 18 Gauge



SKU: 122658

Stainless Drain Pan

- **Size:** 32.00" W x 36.00" L x 2.00" H
- **Finish/Material:** Stainless Steel - 18 Gauge

*Powder Coated White Cold Rolled Steel



Commercial Applications

EQUIPMENT & SPECIALTY PANS

Equipment always poses a spill potential and safety hazard in a production facility or industrial environment. Machines need oil and lubricating fluids to operate. These fluids can and do leak creating a workplace hazard. Pans are simple, economical tools that effectively contain spills and prevent accidents that would otherwise be commonplace in factories or warehouses. Using Equipment and Specialty Pans protects workers against injury and meets OSHA requirements.

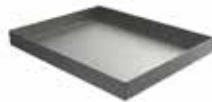
EQUIPMENT PANS FOR BUSINESS



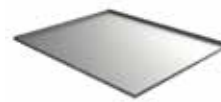
HVAC Drip Pans



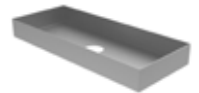
Oil Drip Pans



Hydraulic Drip Pans



Vacuum Pump Pans



Aircraft Drip Pans

SPECIALTY PANS FOR BUSINESS



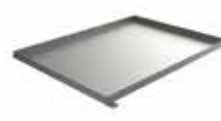
Sloped Drain Pans



Round Drip Pans



Assembly Drip Pans



Floor Mount Pans



Rolling Drip Pans



Hanging Pans



Handled Drip Pans



Pallet Rack Pans



Wall Mount Pans







KILLARNEY

METALS

Love Our Products?

Help us get the word out by sharing your reviews and posting photos of your completed projects. We want to see them!

Follow & Tag Us



Facebook - @KillarneyMetals



Instagram - @KillarneyMetals



Twitter - @KillarneyMetals



Linkedin - @Killarney-Metals



Youtube - @KillarneyMetals

Contact Us

877.801.7417

www.killarneymetals.com

customerservice@killarneymetals.com

710 E. Catawba Street, Suite A

Belmont, NC 28012

Killarney Metals

2019 Product Catalog

Copyright ©2019 Killarney Metals

